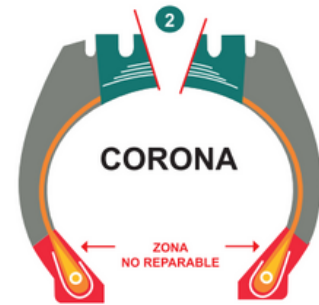
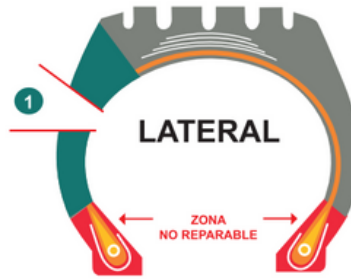
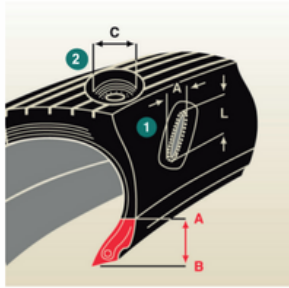

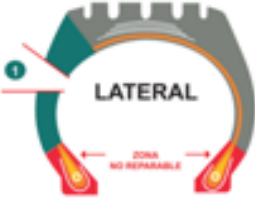


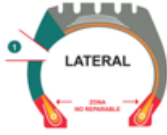



APLICACIÓN DE PARCHES QUALITY PLUS



AUTOMOVIL				
 CORONA	 LATERAL			
	ANCHO	LARGO	125-175	185-255
Pulg - (mm)	INCHES (mm)	INCHES (mm)		
1/4" (6mm)	1/4" (6mm)	1/2" (13mm)	PER 10	PER 10
	1/4" (6mm)	1 1/2" (40mm)	PER 12	PER 12
	1/4" (6mm)	2" (50mm)	PER 14	PER 14
3/8" (10mm)	3/8" (10mm)	3/8" (10mm)	PER 10	PER 10
	3/8" (10mm)	1 1/2" (40mm)	PER 12	PER 12
	3/8" (10mm)	2" (50mm)	PER 14	PER 14
1/2" (13mm)	1/2" (13mm)	1 1/2" (40mm)	PER 12	PER 12
	1/2" (13mm)	2" (50mm)	PER 14	PER 14
3/4" (20mm)	3/4" (20mm)	1 1/2" (40mm)	PER 12	PER 12
	3/4" (20mm)	2" (50mm)	PER 14	PER 14
1" (25mm)	1" (25mm)	1 1/2" (40mm)	PER 12	PER 12
	1" (25mm)	2" (50mm)	PER 14	PER 22

CARGA					
					
	ANCHO	LARGO	6.00-7.50 7R-8.5R	8.25-10.00 9R-11R	11.00-14.00 12R-16.5R
Pulg - (mm)	INCHES (mm)	INCHES (mm)	215/-235/-	235/-285/-	295/-425/-
1/8" (3mm)	1/8" (3mm)	1/8" (3mm)	PER 10	PER 10	PER 10
1/4" (6mm)	3/8" (10mm)	3/8" (10mm)	PER 12	PER 12	PER 12
	1 Cable	1 1/2" (40mm)	PER 20	PER 20	PER 20
	1 Cable	3" (75mm)	PER 22	PER 22	PER 22
1/2" (13mm)			PER 22		
	2 Cables	3/4" (20mm)	PER 20	PER 20	PER 22
	2 Cables	1 1/2" (40mm)	PER 20	PER 22	
	2 Cables	2 1/2" (65mm)	PER 22		
	3/8" (10mm)	1 1/2" (40mm)	PER 20		PER 40
	3/8" (10mm)	2 3/8" (60mm)	PER 22		PER 40
	3/8" (10mm)	3 1/8" (80mm)			PER 42
3/4" (20mm)					PER 42
	1/2" (13mm)	1 1/2" (40mm)	PER 22	PER 40	PER 40
	1/2" (13mm)	2 1/2" (65mm)	PER 22	PER 40	PER 42
	1/2" (13mm)	4" (100mm)		PER 42	PER 44
	1/2" (13mm)	5" (125mm)		PER 42	PER 44
	3/4" (20mm)	1" (25mm)	PER 22	PER 40	PER 42
	3/4" (20mm)	2 1/2" (65mm)		PER 42	PER 44
	3/4" (20mm)	4 1/8" (110mm)		PER 42	PER 44
1" (25mm)				PER 44	PER 44
				PER 35	PER 35
	1" (25mm)	2" (50mm)	PER 40	PER 42	PER 44
	1" (25mm)	3" (75mm)		PER 42	PER 44
	1" (25mm)	4" (100mm)		PER 44	PER 44
	1 1/4" (32mm)	2" (50mm)		PER 42	PER 44
	1 1/4" (32mm)	3 1/8" (80mm)		PER 44	PER 44
	1 1/4" (32mm)	4" (100mm)		PER 44	PER 44
	1 1/2" (40mm)	2" (50mm)		PER 44	PER 44
1 1/2" (40mm)	3 1/8" (80mm)		PER 44	PER 44	
1 1/2" (40mm)	4" (100mm)			PER 46	

NOTA:

Las tablas de aplicación son exclusivamente una guía sugerida, en donde las limitaciones permisibles y la selección del parche para la reparación, debe de tener en consideración las condiciones específicas del manejo, carga, presión, velocidad, etc, del vehículo.

